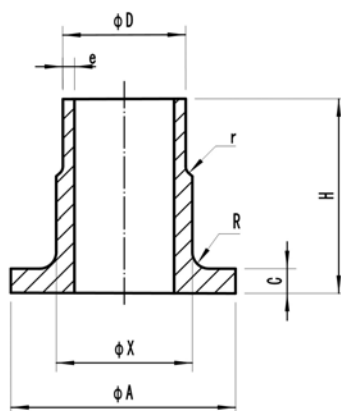


# Composite Weld Neck Flanges-Inner Flange

10Bar

14Bar

Material: CuNi 90/10  
CuNi 70/30



Outside diam- eter of pipe		DIN 86037													
		10Bar							16Bar						
ØD	Wall thickness	e	ØA	H	C	ØX	R	Theo.	Wall thickness	ØA	H	C	ØX	R	Theo.
								weight							weight
nominal	actual	e	mm	mm	mm	mm	mm	Kg/piece	e	mm	mm	mm	mm	mm	Kg/piece
inch	mm	mm	mm	mm	mm	mm	mm		mm	mm	mm	mm	mm	mm	
0.75	25	1.5	58	40	5	27	3	0.17	1.5	58	40	5	27	3	0.17
1	30	1.5	68	40	5	32	4	0.24	1.5	68	40	5	32	4	0.24
1.25	38	1.5	78	40	5	40	4	0.26	1.5	78	40	5	40	4	0.26
1.5	44.5	1.5	88	45	6	46.5	4	0.42	1.5	88	45	6	46.5	4	0.42
2	57	1.5	102	45	6	59	5	0.53	1.5	102	45	6	59	5	0.53
2.5	76.1	2	122	45	6	78	5	0.64	2	122	45	6	78	5	0.64
3	88.9	2	138	50	7	91	5	0.86	2.5	138	50	7	91	5	0.9
4	108	2.5	158	50	7	110	5	1.1	2.5	158	50	7	110	5	1.1
5	133	2.5	188	50	7	135.5	5	1.5	3	188	50	7	135.5	5	1.55
6	159	2.5	212	50	9	161.5	5	2	3	212	50	9	161.5	5	2.1
7	193.7	2.5	242	50	9	197	5	2.3	3.5	242	50	9	197	5	2.55
8	219.1	3	268	50	9	222	5	2.7	3.5	268	50	9	222	5	2.9
10	267	3	320	50	9	270	5	3.4	4	320	50	9	270	5	3.8
12	323.9	4	370	50	11	327	7	4.6	5	370	50	11	327	7	5.4
14	368	4	430	50	11	371	7	6.2	5.5	430	50	11	371	7	6.95
16	419.1	4	482	50	12	422	7	7.5	6	482	50	12	422	7	8.65
18	457.2	4	530	50	12	460	7	9	6	530	50	12	460	7	10.15
20	508	4.5	585	50	12	511	7	10.65	6.5	585	50	12	511	7	11.9
24	610	5	685	60	14	613	9	14.9	8	685	60	14	613	9	17.65

Flanges



Shanghai Shihang Copper Nickel Pipe Fittings Co., Ltd.

TEL:86-21-58050989 FAX:86-21-68291168 E-mail:sales@shshihang.com Website:www.shshihang.com