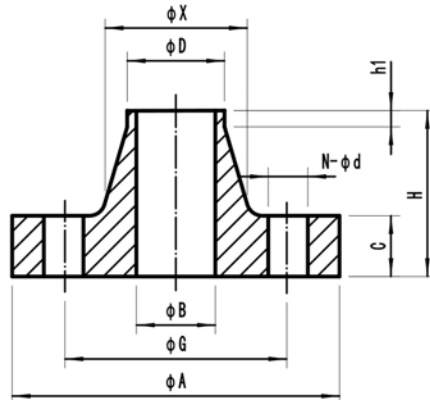


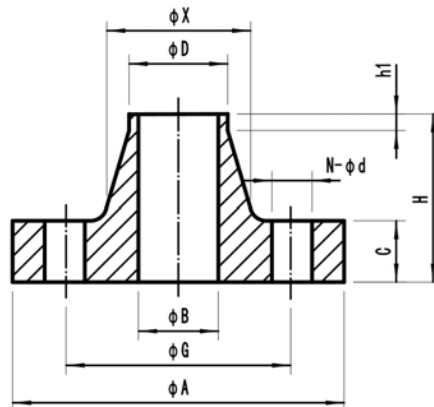
Material: CuNi 90/10  
CuNi 70/30



Outside diameter of pipe		EEMUA 145									
		16Bar									
nominal inch	actual mm	øA mm	H mm	C mm	øX mm	øB mm	h1 mm	Drilling			Theo. weight
								øG mm	N bolt holes	ød mm	Kg/piece
0.5	16	89	48	14	23	12	8	60.3	4	15.9	0.74
0.75	25	98	52	16	32	21	7	69.8	4	15.9	1.04
1	30	108	56	16	42	25	8	79.4	4	15.9	1.36
1.25	38	117	57	17	51	33.03	8	88.9	4	15.9	1.7
1.5	44.5	127	62	20	61	39.53	7	98.4	4	15.9	2.38
2	57	152	64	25	73	52.16	9	120.6	4	19	3.93
2.5	76.1	178	70	27	91	71.23	8	139.7	4	19	5.62
3	88.9	190	70	27	105	84.08	8	152.4	4	19	6.27
4	108	229	76	27	135	102.13	8	190.5	8	19	9.53
6	159	279	89	27	192	153.75	8	241.3	8	22.2	13.65
8	219.1	343	98	31	246	211.1	8	298.4	8	22.2	21.19
10	267	406	98	31	305	257.97	8	362	12	25.4	29.52
12	323.9	483	98	35	365	312.83	8	431.8	12	25.4	44.77
14	368	533	99	41	400	354.22	8	476.2	12	28.6	57.27
16	419.1	597	106	43	457	404.17	8	539.8	16	28.6	74.4
18	457.2	635	113	45	505	441.5	8	577.8	16	31.8	88.16
20	508	698	118	45	559	490.5	8	635	20	31.8	106.2
24	610	813	137	49	664	589.5	8	749.3	20	34.9	153.15
28	711	927	145	72	748	687.5	8	864	28	34.9	255.28
32	813	1060	160	72	876	786.5	8	978	28	41.1	291.45
36	914	1168	175	72	984	883.5	8	1086	32	41.1	356.45

Flanges

Material: CuNi 90/10  
CuNi 70/30



Outside diameter of pipe		EEMUA 145									
		20Bar									
ØD		ØA	H	C	ØX	ØB	h1	Drilling			Theo.
nominal	actual							ØG	N	Ød	weight
inch	mm	mm	mm	mm	mm	mm	mm	mm	bolt holes	mm	Kg/piece
0.5	16	89	48	14	23	12	8	60.3	4	15.9	0.74
0.75	25	98	52	16	32	21	7	69.8	4	15.9	1.04
1	30	108	56	16	42	25	8	79.4	4	15.9	1.36
1.25	38	117	57	17	51	33.03	8	88.9	4	15.9	1.7
1.5	44.5	127	62	20	61	39.53	7	98.4	4	15.9	2.38
2	57	152	64	25	73	52.16	9	120.6	4	19	3.93
2.5	76.1	178	70	27	91	71.23	8	139.7	4	19	5.62
3	88.9	190	70	27	105	84.08	8	152.4	4	19	6.27
4	108	229	76	27	135	102.13	8	190.5	8	19	9.53
6	159	279	89	27	192	152.38	8	241.3	8	22.2	13.99
8	219.1	343	98	31	246	210.1	8	298.4	8	22.2	21.57
10	267	406	98	31	305	255.93	8	362	12	25.4	30.47
12	323.9	483	98	35	365	309.74	8	431.8	12	25.4	46.56
14	368	533	99	41	400	351	8	476.2	12	28.6	59.49
16	419.1	597	106	43	457	399.84	8	539.8	16	28.6	78.03
18	457.2	635	113	45	505	438.5	8	577.8	16	31.8	91.08
20	508	698	118	45	559	486.5	8	635	20	31.8	110.65
24	610	813	137	49	664	584.5	8	749.3	20	34.9	160.79
28	711	927	145	72	748	681.5	8	864	28	34.9	249.09
32	813	1060	160	72	876	779.5	8	978	28	41.1	303.95
36	914	1168	175	72	984	876.5	8	1086	32	41.1	371.8

Flanges

