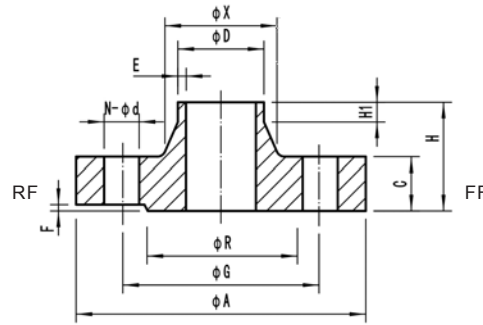


Solid Welding Neck Flanges

Pn10

Pn16

Material: CuNi 90/10
CuNi 70/30



Outside diameter of pipe		DIN 2632											
		Pn10											
nominal inch	actual mm	øA mm	H mm	C mm	øX mm	øR mm	F mm	E mm	Y mm	Drilling			Theo. weight Kg/piece
										øG mm	N bolt holes	ød mm	

ND ½ TO 7 Welding Neck Flange as per DIN2633, NP 16 are be used

8	219.1	340	62	24	235	268	3		16	295	8	22	12.84
10	267	395	68	26	285	320	3		16	350	12	22	16.7
12	323.9	445	68	26	344	370	4	To be specified by purchaser	16	400	12	22	19.77
14	368	505	68	26	385	430	4		16	460	16	22	26.81
16	419.1	565	72	26	440	482	4		16	515	16	26	32.49
20	508	670	75	28	542	585	4		16	620	20	26	43.28
24	610	780	80	28	642	685	5		18	725	20	30	50.67

Outside diameter of pipe		DIN 2633											
		Pn16											
nominal inch	actual mm	øA mm	H mm	C mm	øX mm	øR mm	F mm	E mm	Y mm	Drilling			Theo. weight Kg/piece
										øG mm	N bolt holes	ød mm	

0.5	20	95	35	14	30	45	2		6	65	4	14	0.74
0.75	25	105	38	16	38	58	2		6	75	4	14	1.08
1	30	115	38	16	42	68	2		6	85	4	14	1.3
1.25	38	140	40	16	52	78	2		6	100	4	18	1.92
1.5	44.5	150	42	16	60	88	3		7	110	4	18	2.11
2	57	165	45	18	72	102	3	To be specified by purchaser	8	125	4	18	2.88
2.5	76.1	185	45	18	90	122	3		10	145	4	18	3.48
3	88.9	200	50	20	105	138	3		10	160	8	18	4.2
4	108	220	52	20	125	158	3		12	180	8	18	5.25
5	133	250	55	22	150	188	3		12	210	8	18	7.15
6	159	285	55	22	175	212	3		12	240	8	22	8.8
7	193.7	315	60	24	210	242	3		12	270	8	22	11.19
8	219.1	340	62	24	235	268	3		16	295	12	22	12.5
10	267	405	70	26	285	320	3		16	355	12	26	17.72
12	323.9	460	78	28	344	378	4		16	410	12	26	25
14	368	520	82	30	390	438	4		16	470	16	26	35.45
16	419.1	580	85	32	445	490	4		16	525	16	30	45.21
20	508	715	90	34	548	610	4		16	650	20	33	69.3
24	610	840	95	36	652	725	5		18	770	20	36	85.65

Flanges



Shanghai Shihang Copper Nickel Pipe Fittings Co., Ltd.

TEL:86-21-58050989 FAX:86-21-68291168 E-mail:sales@shshihang.com Website:www.shshihang.com